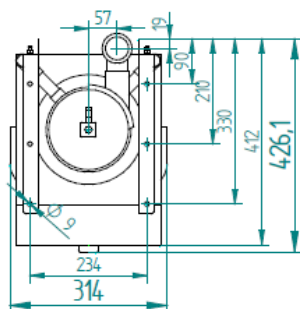
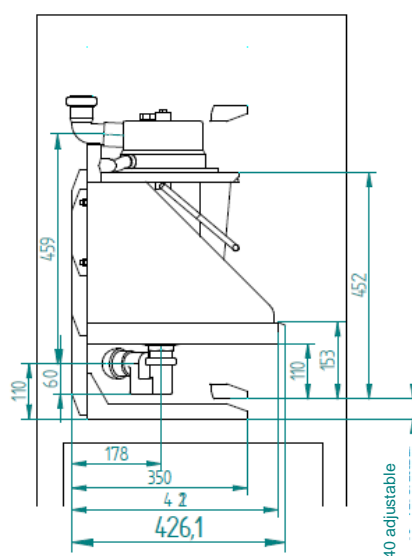
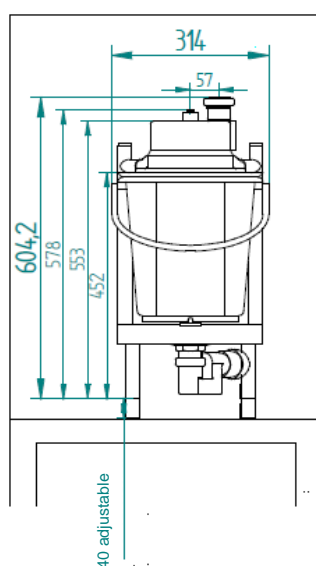


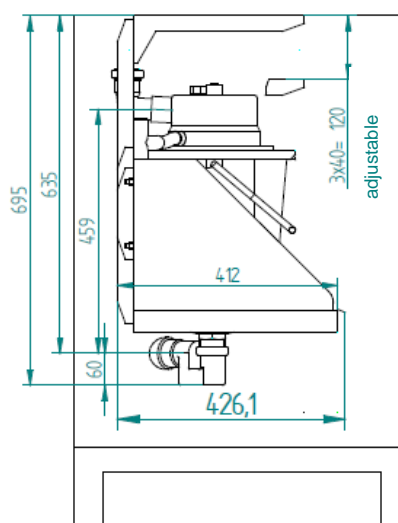
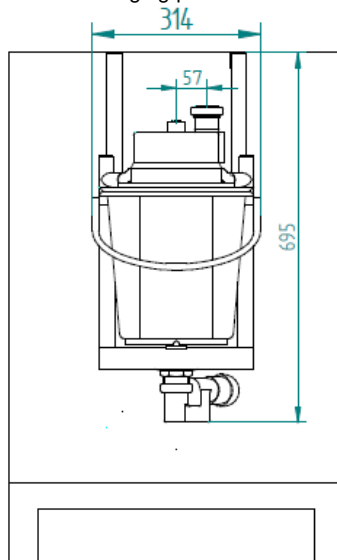
WMF Grounds Separator planning information for WMF 9000 F



Mounted vertically



Mounted in a hanging position



WMF Grounds Separator planning information for WMF 9000 F

Dimensions and empty weight	Width Height Depth Capacity Weight	314mm 605mm 427mm Approx. 12liter Approx. 12kg
Installation Clearance	For operating, service, and safety reasons the machine should be installed with a clearance from the building or non-WMF components of not less than 50 mm at the sides and the back wall. Clearance of at least 20 mm above the grounds separator is recommended. The height of the installation surface above the floor is at least 850 mm. If the coffee machine connections are to be run downwards through the counter, please make space for the lines, which can reduce the usable space below the machine. Additional space for grounds through counter need to be considered on site if necessary.	
Installation surface / water spray	The device must be placed and leveled on a horizontal, sturdy, water-resistant, and heatproof base. The device must not be cleaned using a water jet. The device must be installed where it is protected against water spray. The device must not be located on a surface that is sprayed or cleaned with a water hose, steam jets, steam cleaner, or similar devices.	
Installation information	Suitable for vertical mounted and hanging installation. Only to be installed with pipe siphon. Due to the adjustable feet the grounds separator can be adjusted to a minimum of 579 mm and maximum 695 mm height depending on the position and height of the siphon or drain	
Ventilation of base cabinet	In order to avoid moisture an adequate ventilation must be provided when installing the grounds separator in the base cabinets (ventilation slots, holes). Air inlet at the lowest point and highest point of the cabinet each need to have 5 dm ² surface. The separator need to be installed between the air inlet and outlet	
Water supply rinsing water	The rinsing water inlet must come from the coffee machine	
Water drainage	The drainage should be provided on site and connected to a pipe or hose with minimum 1 ½" (DN40) with a minimum downward slope of 2cm/m. The odor trap need to be a pipe siphon. If the siphon is not directly located under the drain pan and drainage conditions are not in an optimal way a ventilation between grounds separator and pipe siphon is recommended.	

For more information as the instruction manual , safety data sheets and certificates , see:
<https://coffeeconnect2.wmf.com>

All information refers to coffee machines/ equipment as standard version. Individual solutions can differ from the standard version.