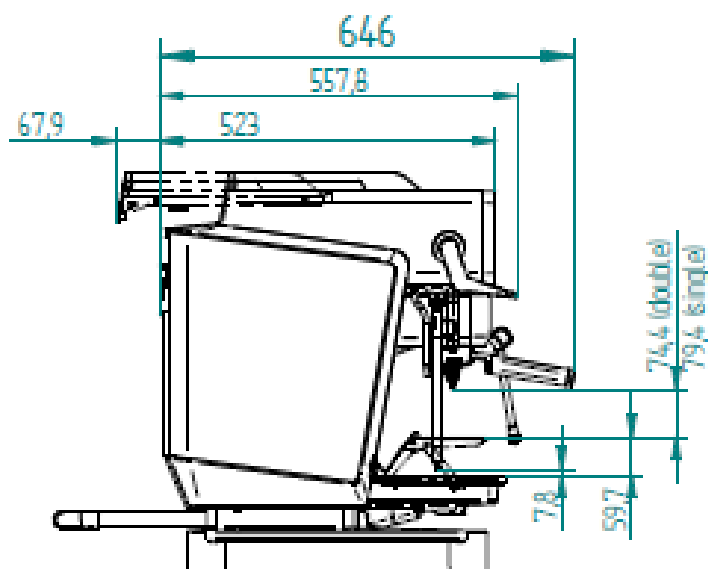
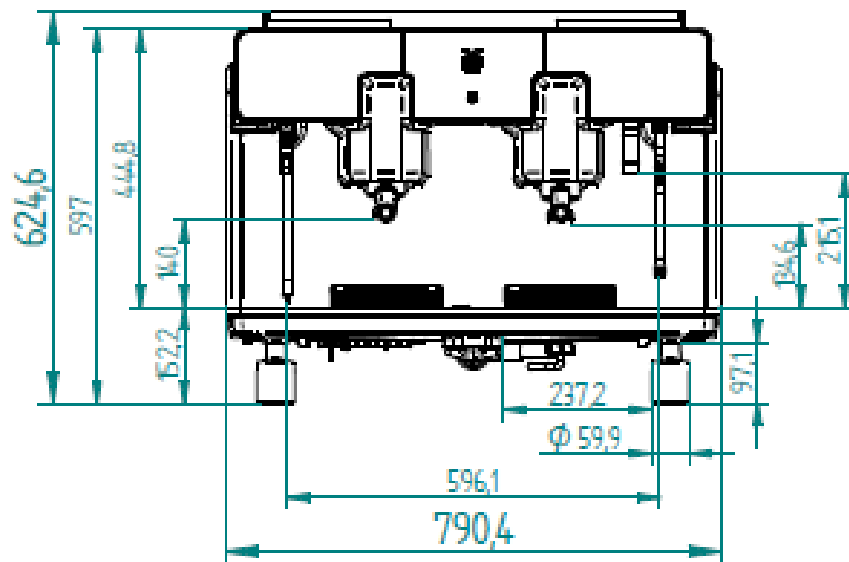
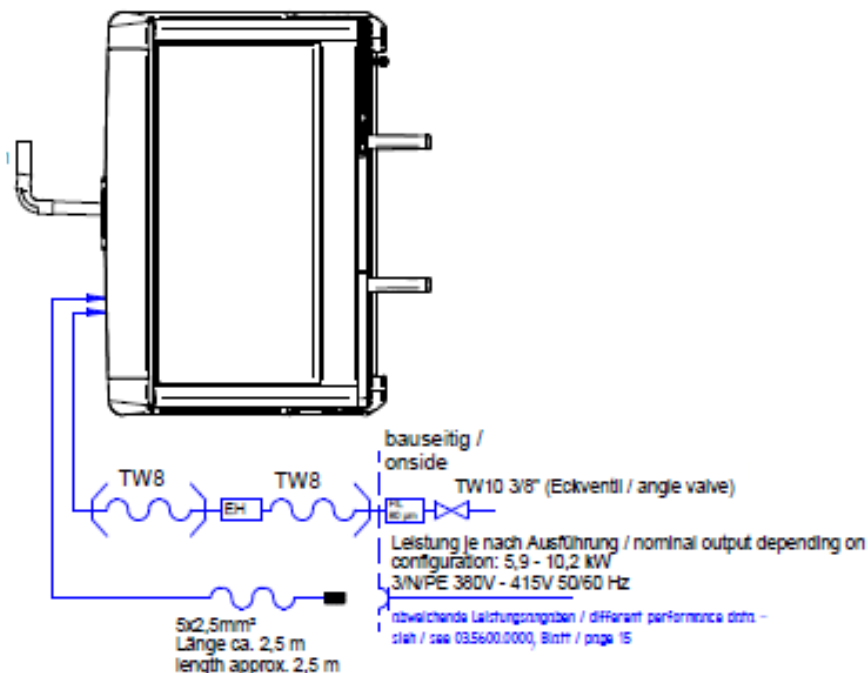
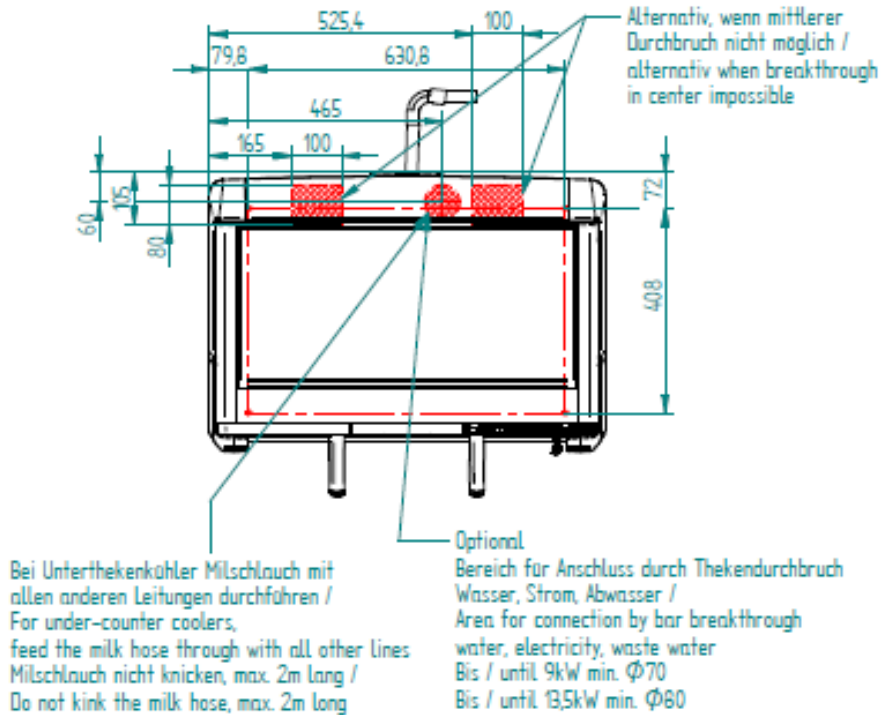


## WMF espresso Next planning information



## WMF espresso Next planning information



## WMF espresso Next planning information

### Conditions for usage and installation

Any necessary on-site preparatory work for electricity, water and drainage connections at the customer's premises is to be arranged by the machine owner / operator. The work must be carried out by authorised installation technicians in compliance with general, country-specific and local regulations. The WMF service engineers may only connect the coffee machine to existing prepared connection points. WMF Service is neither authorised nor responsible for carrying out any on-site installation work prior to connection.

Dimension s and weight empty	Width	791 mm
	Height	625 mm
	Depth	646 mm
	Clearance heights	140 mm Single spout 135 mm Double spout 215 mm Hot water outlet
	Weight empty	Approx. 80 kg
Water supply	Water supply line	3/8" hose connector with main shutoff valve and dirt filter, onsite min. 0.05 MPa (0.5 bar) at 2 l/min, max. 0.6 MPa (6 bar)
	Inlet temperature	Maximum 35 °C.
	Water drainage	Tube a minimum of DN 19, minimum downward slope of 2 cm/m
Electrical data	Nominal power rating	5.9-10.2 kW
	Power supply	380–415 V 50 / 60 Hz (3 / N / PE)
	Degree of protection	IP X0
	Protection Class	I
Installation Clearance	<p>Due to operating, service and safety reasons the machine should be installed with a clearance of not less than 50 mm at the back and sides from the building or non-WMF components and at least 60 mm at the rear. It must be possible to open the cup storage completely. This requires an installation depth/worktop of 600 mm. A minimum working space of 800 mm in front of the coffee machine and a free height of 200 mm above the bean hoppers are recommended. The recommended height of the installation surface above the floor is at least 850 mm.</p> <p>If the connections of the device are to be routed downwards through the counter, please note the space requirements of the lines, which may restrict the usable space in the under-counter area. The corresponding cut-outs must be provided on site.</p> <p>If the coffee machine is operated in combination with a water filter, additional space is required in the under-counter area, depending on the size of the water filter. For further information, please refer to the user manual of the water filter.</p>	

## WMF espresso Next planning information

Ventilation	If ventilation possibility is limited sufficient ventilation need to be provided e.g machine on feet extension, active ventilation, additional ventilation slots/ openings in counter area. Ventilation slots must not be covered. Under certain circumstances a forced ventilation on site is necessary to ensure heat dissipation.
Installation surface / water spray	The device must be placed and leveled on a horizontal, sturdy, water-resistant, and heatproof base. The device must not be cleaned using a water jet. The device must be installed where it is protected against water spray. The device must not be located on a surface that is sprayed or cleaned with a water hose, steam jets, steam cleaner, or similar devices.
Electrical connection	These specifications for the electrical connection and the standards quoted apply for connecting the coffee machine in EU countries. It may be necessary to also observe additional country-specific regulations. Outside the EU countries acceptance of the standards quoted is to be checked by the legal entity or natural person who wishes to use the coffee machine. The local power supply must be constructed according to the currently valid IEC 364 (DIN VDE 0100). An isolated ground socket or a country-specific single-phase socket for single-phase connection, or a 5-pole CEE / CEKON socket per EN 60309 or a country-specific multi-pole socket for a three-phase connection, must be available near the machine. The sockets are part of the customer's on-site installation. The mains cable must not come into contact with hot surfaces. If the mains cable for this device is damaged then it must be replaced by our service personnel or a similarly qualified person, in order to prevent hazards.

## WMF espresso Next planning information

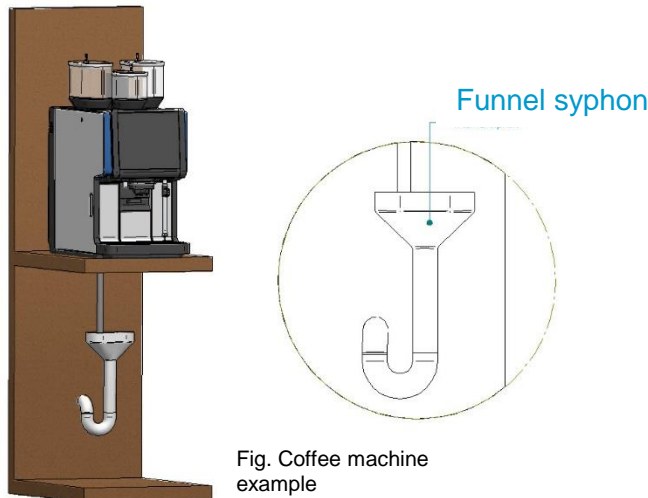


Fig. Coffee machine example

<p>Water supply and drainage</p>	<p>The water supply must be close to the machine (max. 800 mm from the machine). A sufficiently dimensioned shut-off valve (preferably ball valve) and a dirt trap, mesh size 0.80 mm, must be installed in the water supply line in the under-counter cabinet so that it is easily accessible.</p> <p>For the connection from below through the counter, a cut-out must be made on site in one of the hatched areas according to the drawing (see top view). We generally recommend the use of a water filter. Your WMF service partner will be pleased to advise you on the selection of the correct water filter. If the water filter recommended by WMF Service is not installed upstream, the coffee machine may be damaged (e.g., due to scaling).</p> <p>In case of a drain connection, a funnel siphon must be installed in the ventilated drain pipe. It is important to ensure that the funnel siphon is installed in a vertical position. This means that it must always be perpendicular to the water backflow level. It must be installed in such a way that the specified slope of the drain hoses (2%) is maintained.</p> <p>In addition, the height of the funnel siphon must always be below the coffee machine drains and above the actual drain pipe connections (HT40, HT50 or similar).</p> <p>Into one funnel siphon, a maximum of two WMF coffee machines with DN19 hoses should be fed. Other appliances (dishwashers, sinks, etc.) should be installed elsewhere.</p> <p>The funnel siphon incl. the DN19 hoses must not be subjected to any major tensile, pressure or torsional loads. This can cause damage to the mechanical components. As a result, the usability may be lost.</p> <p>Any necessary on-site preparatory work for the drainage connections is to be arranged by the machine owner/operator. The work must be carried out by authorized installation technicians in compliance with general, country-specific and local regulations.</p> <p>The following drawings serve to illustrate the drains and do not include any other connections, such as electricity or supply water!</p>
----------------------------------	---

## WMF espresso Next planning information

Miscellaneous	Ambient temperature	+5 °C to maximum +35 °C (empty the water system in case of frost).
	Maximum humidity	80 % relative humidity without condensation. Always store in a frost-free location.
	Heat dissipation	0.15 kWh/h standby mode 7.00 kWh/h maximum use
	Continuous sound pressure level (Lpa)	< 70 dB(A)

For more information as the instruction manual , safety data sheets and certificates , see:  
<https://coffeeconnect2.wmf.com>

All information refers to coffee machines/ equipment as standard version. Individual solutions can differ from the standard version.