



Premium quality made accessible.
Opening doors for great coffee and
reliable performance in your business.

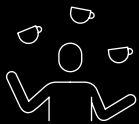


WMF Elevation 10

Effortless coffee without compromise.

WMF Elevation 10.

With its compact design and versatile beverage options, the WMF Elevation 10 fits perfectly into small business environments – with a recommended daily output of 50 cups.

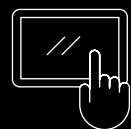


One machine, **endless possibilities**

- Designed for up to 50 cups per day: Perfectly suited for offices, lounges or small hospitality venues with small-medium demand.
- Bean and powder hopper combination: To offer a broad range of beverages, from fresh-bean espresso to milk or chocolate-based drinks.
- Hot water output: Enjoy more than coffee – a dedicated spout delivers hot water for a wider range of beverages.

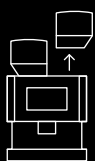
Easy **operation**

- Easy to clean: The patented WMF Click+Clean technology enables hygienic cleaning in about three minutes – no disassembly required.
- Easy to use: Intuitive navigation on the 7-inch touch display makes every interaction effortless (also available with a 10-inch configurable touch display for specific markets).



Big performance **for small spaces**

- Two-boiler system: Separate boilers for coffee and hot water guarantee consistent temperature and fast preparation times.
- 16 g / 24 g brewing units: Brew larger drinks, such as a 16 oz Americano, in a single process without compromising quality.
- WMF quality: Professional-grade components and German engineered grinders ensure durability, reliability and consistently excellent coffee results.



**Further
information
and downloads:**



Further
specifications
and technical
details:



2 Product hoppers

For coffee and powder

Two-boiler concept

Ease of descaling
water & steam boiler

7"-touch display

For easy navigation

Bypass water outlet

Delivers hot water
directly through
the coffee spouts

Adjustable spout

With double coffee and
single milk outlet

Spout illumination

Creates a delightful
ambience

Telemetry

WMF CoffeeConnect
as an option

Water tank

Fixed water tank with 2l or
external water tank with 6l

* Image may contain/show additional options

**For settings where every cup holds
special value.**



Small to medium-sized offices, workspaces and executive areas

From vibrant team zones to exclusive manager or VIP offices – the WMF Elevation 10 brings premium coffee enjoyment to every professional environment. With a broad variety of beverages to suit every taste, it turns daily routines into moments of inspiration and connection. Elegant, compact and intuitive to use, it seamlessly adapts to any setting, providing refined indulgence during meetings, breaks or private relaxation.



Hotels and restaurants

The WMF Elevation 10 delivers refined coffee and tea enjoyment – the perfect way to offer your guests a refreshing break in an inviting atmosphere. Whether during breakfast service, after a fine meal or in the lounge area, it ensures premium beverage quality and smooth operation at all times. Elegant in design and intuitive in use, it enhances the guest experience and perfectly complements the hospitality of your establishment.



Educational institutions

From campus cafés to staff lounges – the WMF Elevation 10 brings premium coffee enjoyment to every corner of academic life. Easy to use and reliable, it keeps students and staff refreshed, inspired and ready for the next challenge.



Waiting and reception zones

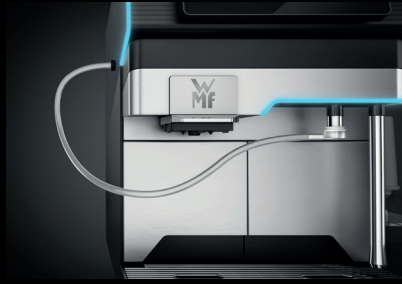
The WMF Elevation 10 turns every waiting moment into an experience of comfort and indulgence. Whether in reception zones or stylish salons, it offers a wide selection of premium coffee and tea specialties, creating a welcoming atmosphere and leaving a lasting impression on guests and clients alike.

Smart simplicity with impressive results. Explore the features of the WMF Elevation 10.



Two product hoppers

The WMF Elevation 10 combines a classic bean hopper with an additional powder hopper – enabling both fresh bean coffee creations and alternative milk or powder-based beverages.



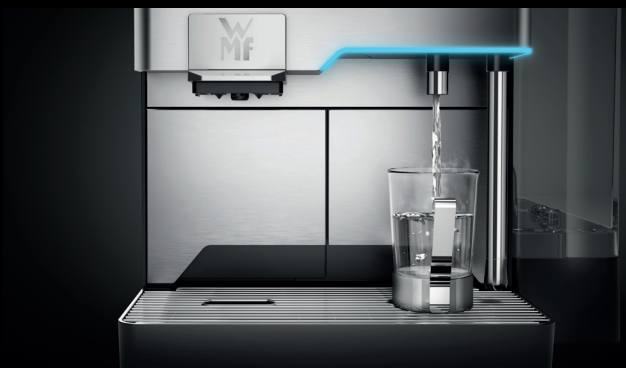
Click+Clean System

The patented cleaning system makes daily milk system cleaning quick, simple, and tablet-free – in just about three minutes. No daily dismantling required.



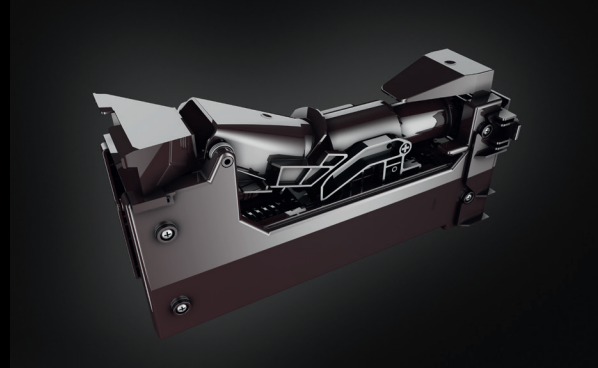
Intuitive touch display

Every interaction feels effortless thanks to intuitive navigation on the large 7-inch touch display. Also available with a 10-inch configurable touch display (for specific markets).



Two-boiler system

The WMF Elevation 10 ensures quick beverage preparation with consistently high coffee quality. The two boilers provide a larger volume of hot water and steam at a stable temperature – enabling fast, efficient service and premium results, every time.



16 g / 24 g brewing units

Easily serve large coffee specialties such as a 16 oz Americano in just one go. Professional grinders and brewers – engineered with the expertise of our premium machines.



WMF CoffeeConnect available as an option.

The WMF Elevation 10 is digital-ready. Our telemetry solution connects your machines, provides insights into machine data and optimizes processes. This allows you to improve the customer experience and implement completely new business models.

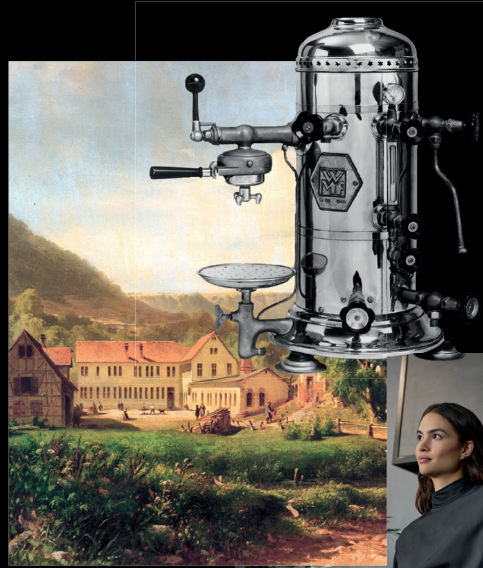
For more information, visit www.wmf-coffeeconnect.com.



We are making history – every day. The development of our coffee machines began back in 1927, the year in which we manufactured our first professional coffee machine. Since then, we have been continuously learning from our customers, in order to create the best coffee experience for you.

Tradition

Our long tradition of German engineering, craftsmanship and attention to detail is still evident today. We stand for the production of excellent coffee machines, comprehensive service and first-class coffee.



Quality

Design, product development, first-class materials, cutting-edge technology – our high quality standards have brought us to where we are today. They ensure that every machine offers a long service life and outstanding performance.



Innovation

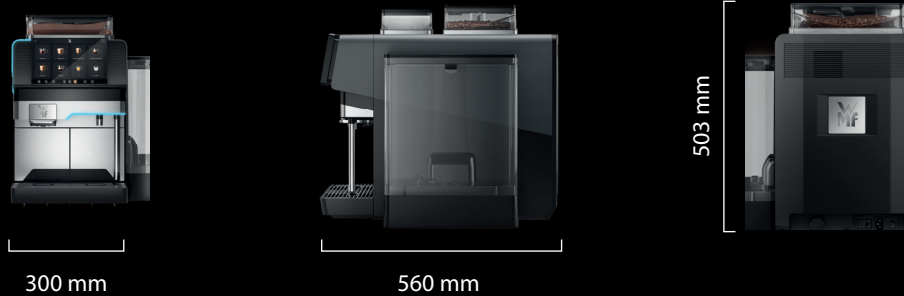
We are constantly setting new standards and developing innovative solutions to help you optimize your coffee business.



Service

From installation and maintenance to repairs: Our outstanding service solutions are designed to keep your machines up to date with the latest technology throughout their entire service life. We make sure your coffee machine works reliably and delivers excellent coffee.

Technical Data



WMF Elevation 10

| | |
|--|--|
| Power connection / Nominal power output | 230 V, 50/60 Hz / 2.3 kW |
| Recommended daily / max. hourly output | 50 cups per day |
| External dimensions (width, height, depth) | 300 / 503 / 560 mm (excl. water tank) |
| Water supply | 4 l water tank / constant water supply |
| Net weight | Approx. 20 kg |
| Capacity of bean hopper | 2.2 l / 550 g |
| Capacity of powder hopper | 0.78 l / 450 g |

* Performance was determined using a machine with a fixed water connection and depends on the size of the cup.
This is an average value for your reference.

Get in touch now and
let's take the next steps together.

How to reach us:
professional-coffeemachines@wmf-group.com
www.wmf-coffeemachines.com



Alternatively, you can
simply use the contact
form via the QR code

WMF GmbH • WMF Platz 1 • 73312 Geislingen/Steige

DESIGNED TO PERFORM

wmf-coffeemachines.com